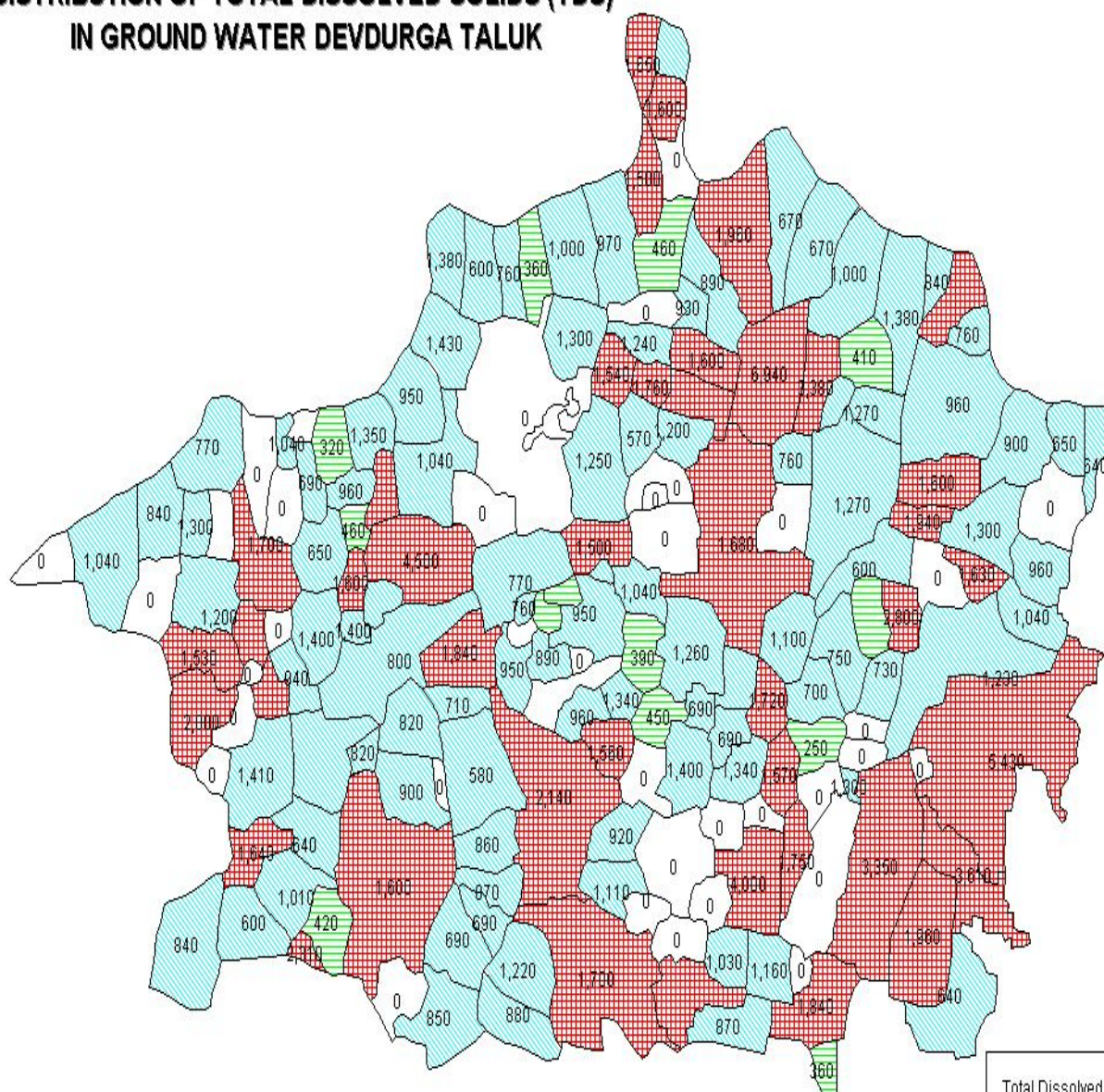


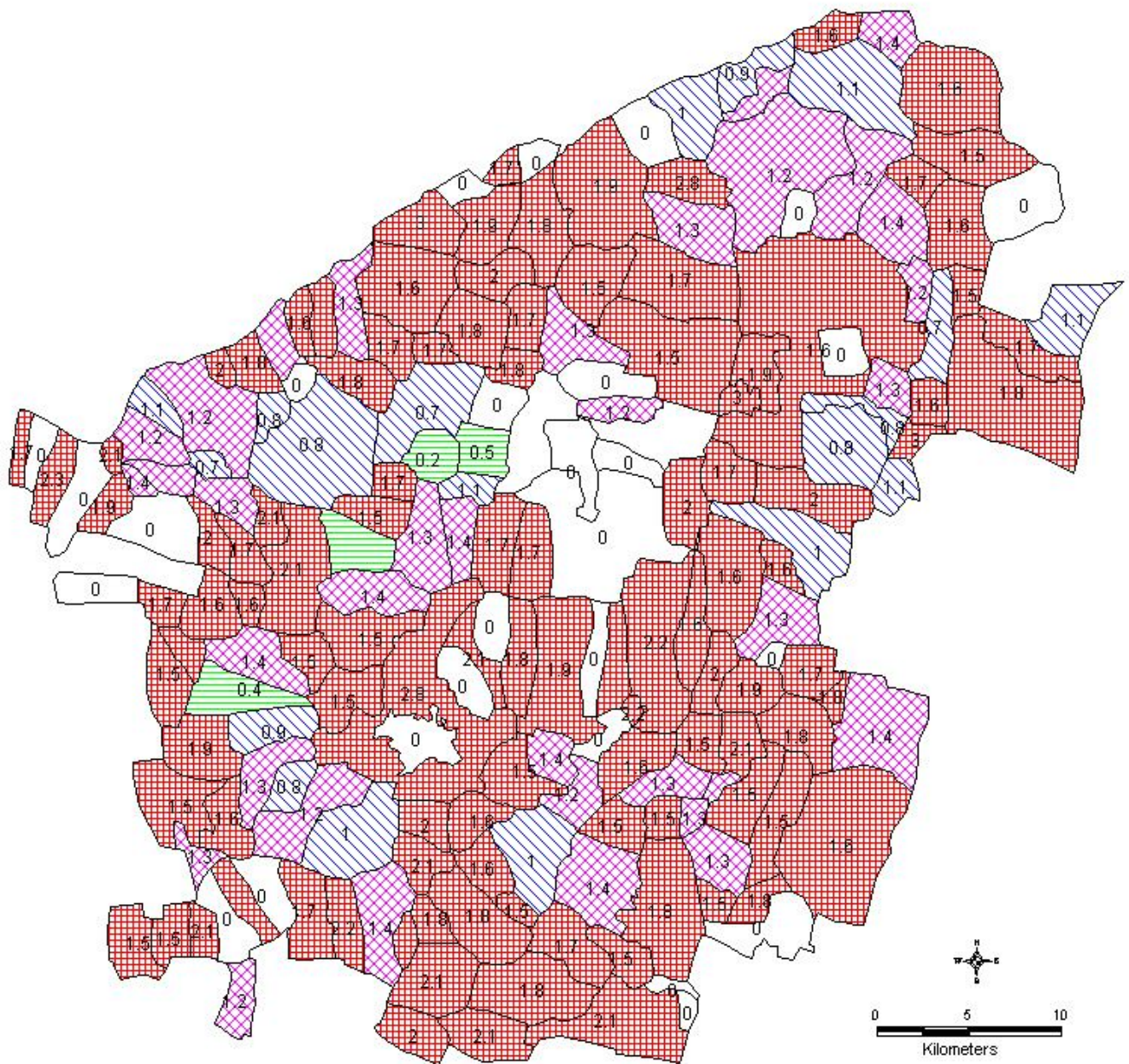
DISTRIBUTION OF TOTAL DISSOLVED SOLIDS (TDS) IN GROUND WATER DEVDURGA TALUK



Prepared By:
District NRDMS Centre,
Zilla Panchayath, Raichur

Total Dissolved Solids (mg/l)	
	Data N.A. (38)
	Desirable (<500) (13)
	Permissible (500 to 1,500) (94)
	Not Permissible (>1,500) (42)

DISTRIBUTION OF FLUORIDE IN GROUND WATER IN LINGSUGUR TALUK




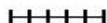






Prepared By:
District NRDMS Centre,
Zilla Panchayath, Raichur

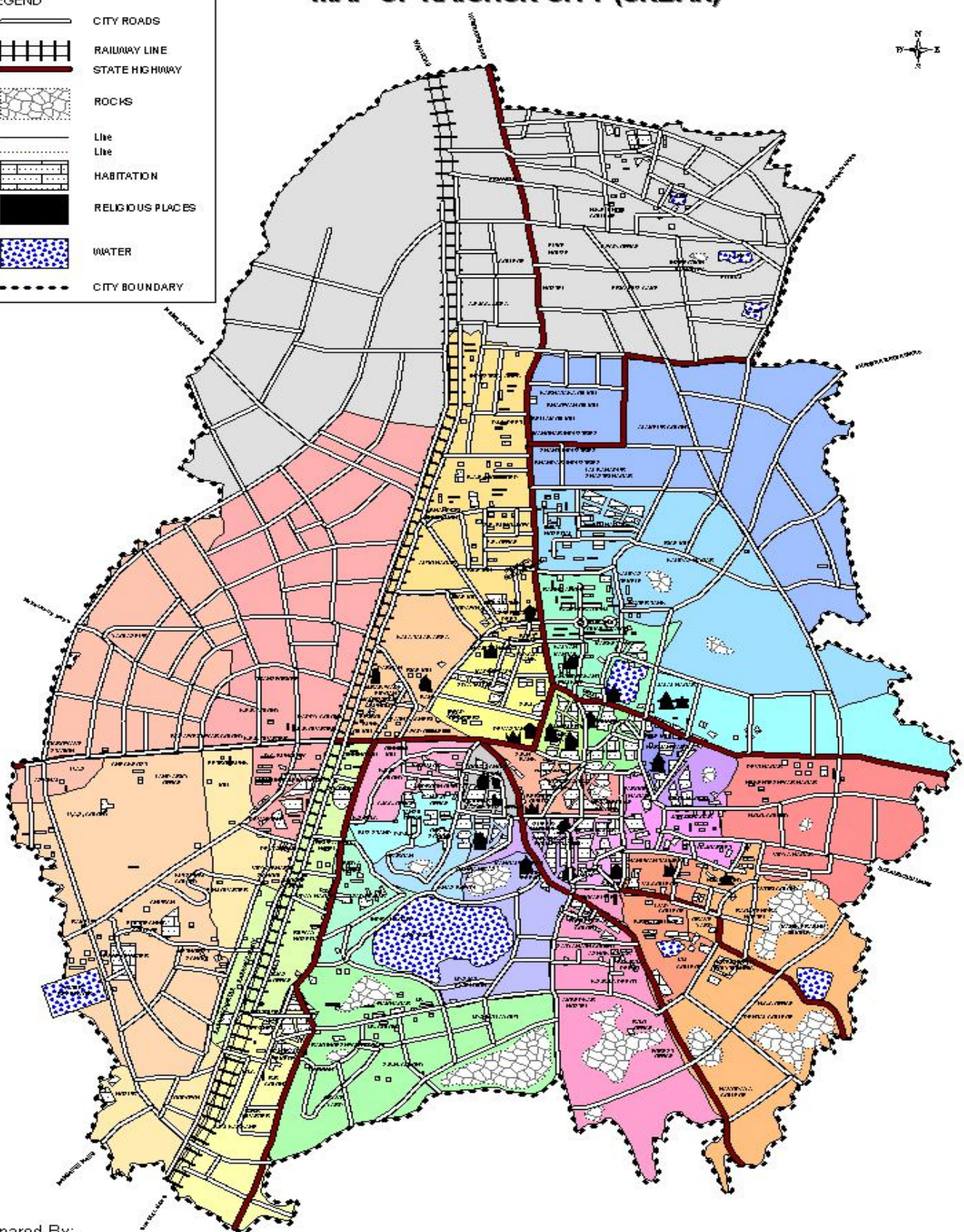
Fluoride Content (mg/l)

 Data N.A.	(28)
 Non Problematic (< 0.6)	(4)
 Desirable (0.6 to 1.2)	(19)
 Max. Permissible (1.2 to 1.5)	(35)
 Not Permissible (>1.5)	(108)

MAP OF RAICHUR CITY (URBAN)

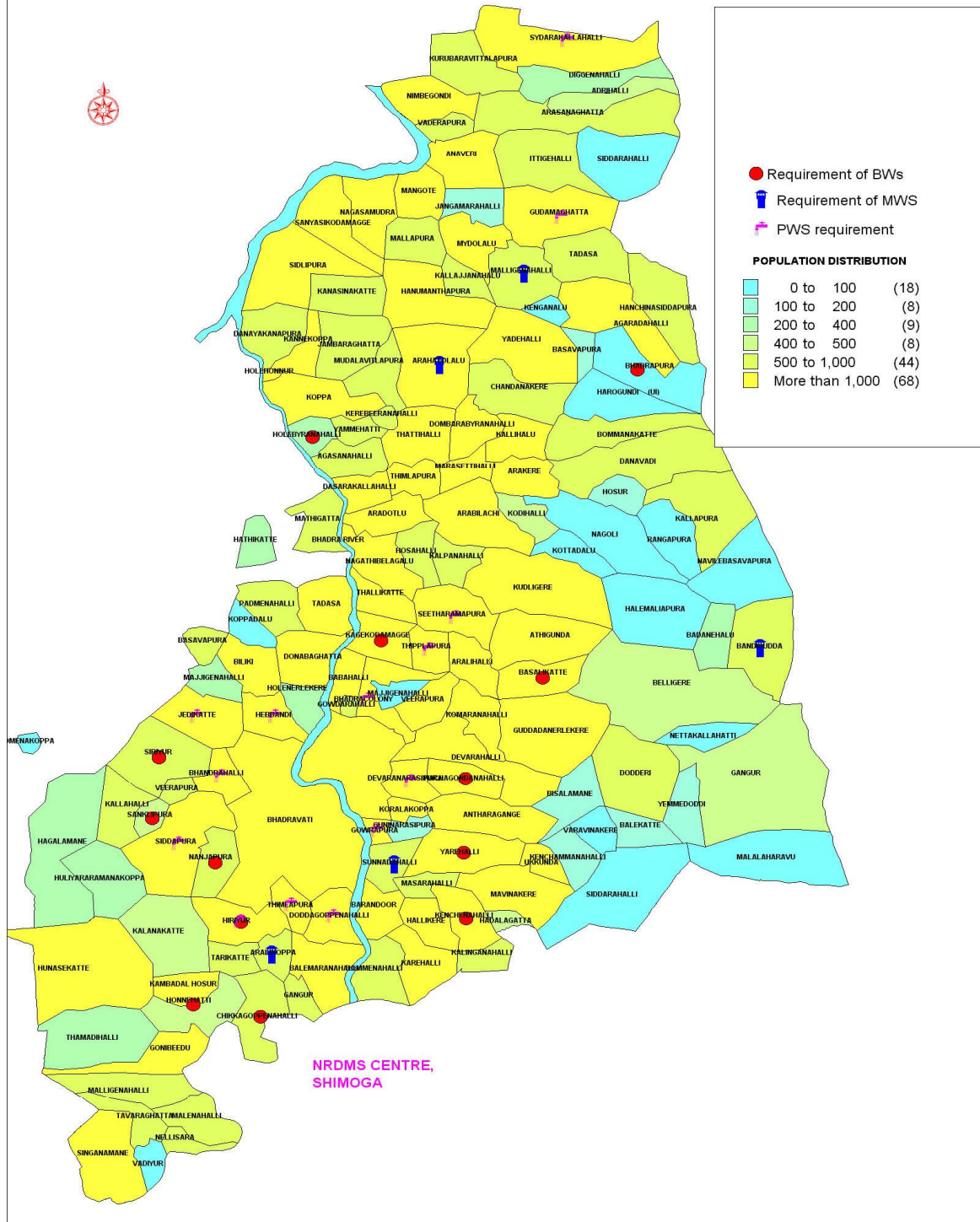
LEGEND

-  CITY ROADS
-  RAILWAY LINE
-  STATE HIGHWAY
-  ROCKS
-  Live
-  Live
-  HABITATION
-  RELIGIOUS PLACES
-  WATER
-  CITY BOUNDARY

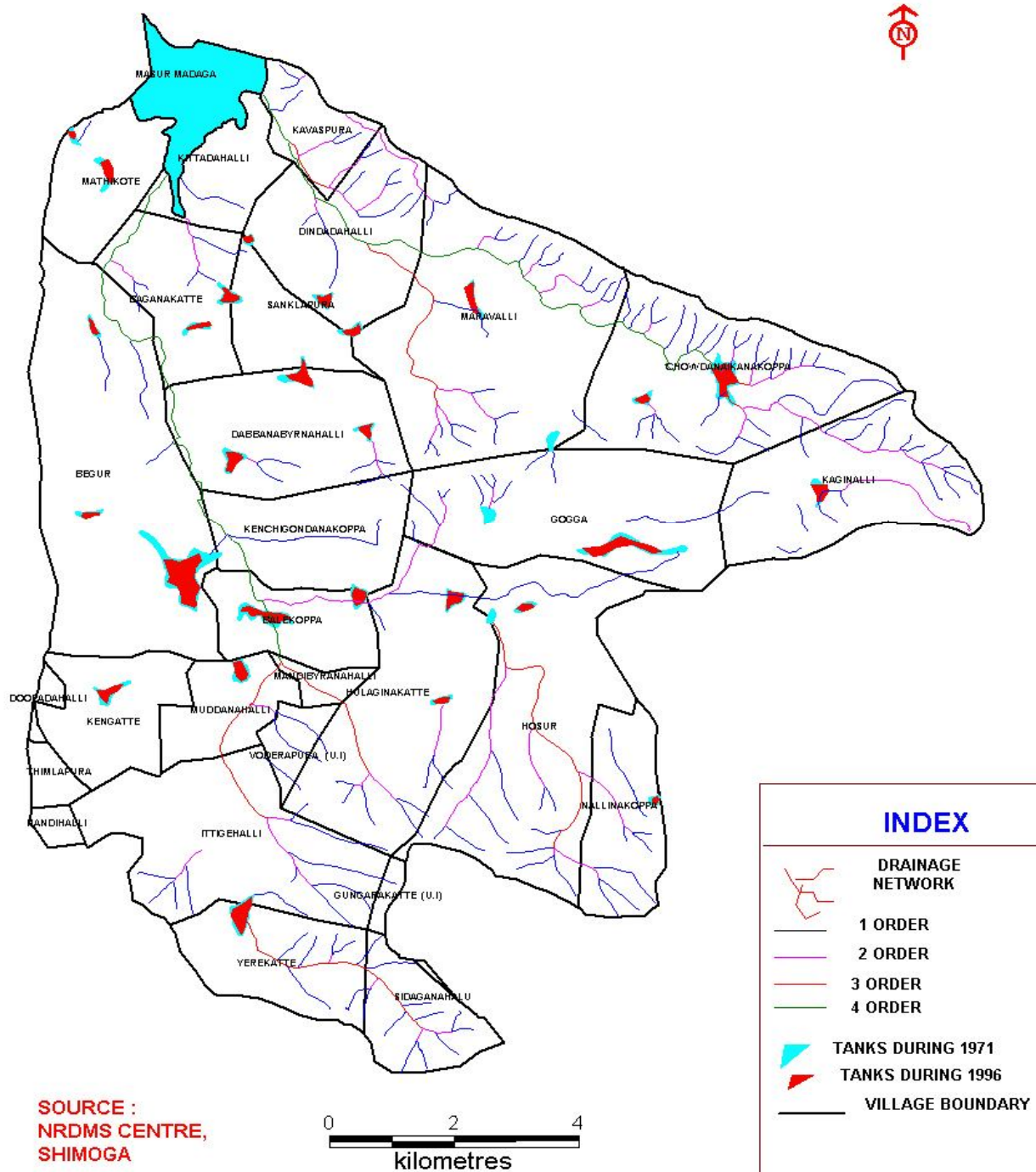


Prepared By:
District NRDMS Centre,
Zilla Panchayath, Raichur

REQUIREMENT OF DRINKING WATER FACILITIES (BW/HP, MWS AND PWS) IN BHADRAVATI TALUK



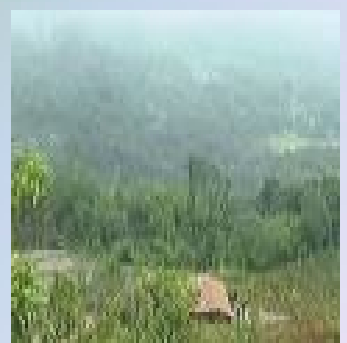
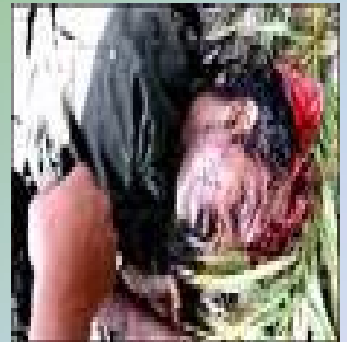
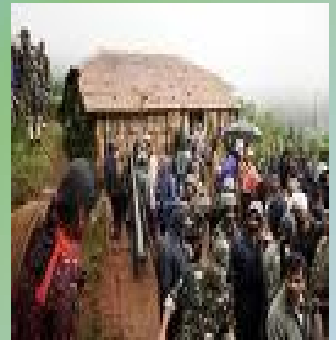
CHANGE IN WATERSPREAD AREA OF M.I. TANKS (SUPERIMPOSITION OF 1996-IRS DATA ON 1971-72 SOI TOPOSHEET DATA)



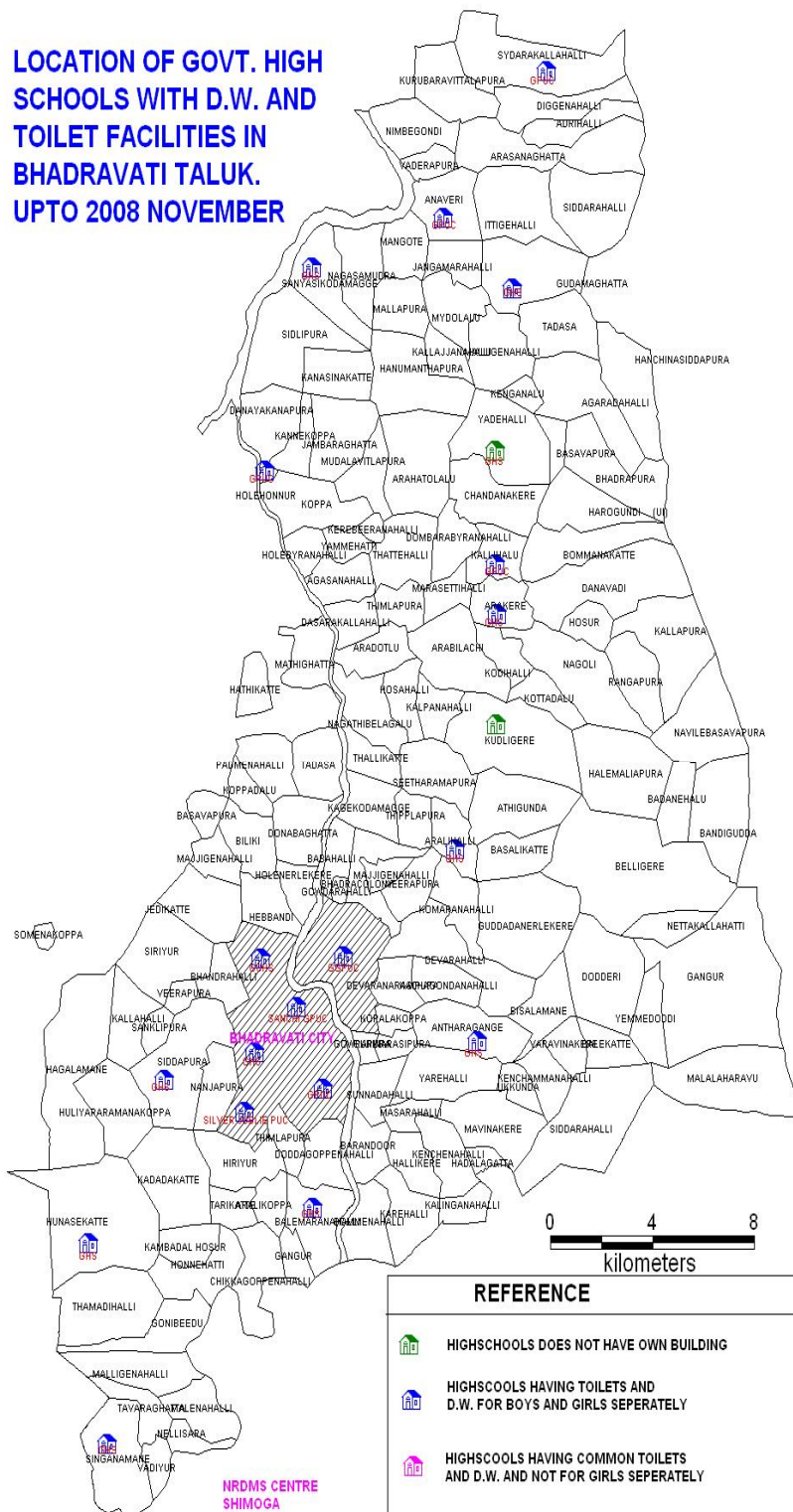
IDENTIFIED NAXAL AFFECTED VILLAGES IN SHIMOGA DISTRICT DURING 2008-09



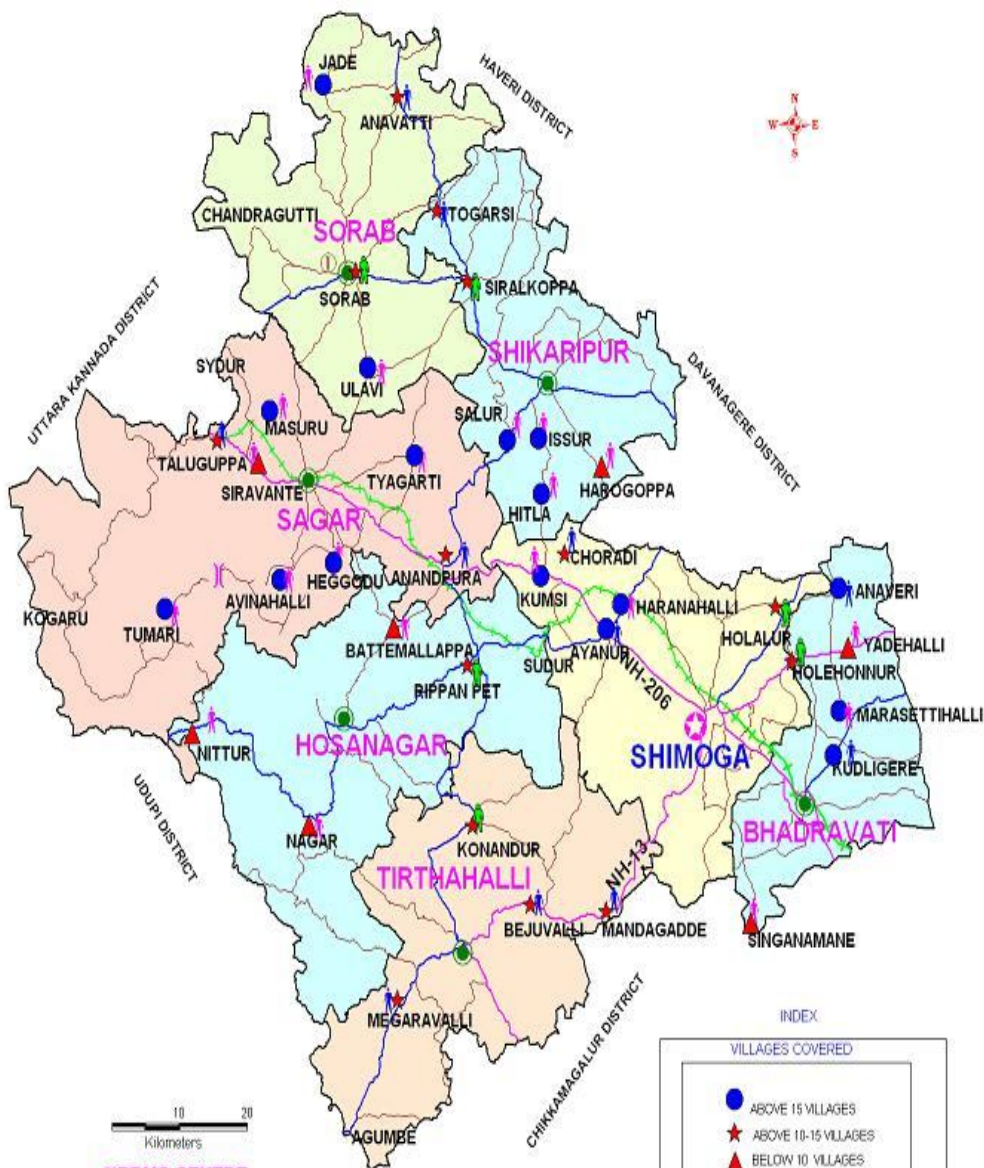
SOURCE : DEPUTY COMMISSIONER'S OFFICE, SHIMOGA



LOCATION OF GOVT. HIGH SCHOOLS WITH D.W. AND TOILET FACILITIES IN BHADRAVATI TALUK. UPTO 2008 NOVEMBER



LOCATION OF RURAL HAATS IN SHIMOGA DISTRICT



REFERENCE

- NATIONAL HIGHWAY
- STATE HIGHWAY
- MAJOR DIST. ROAD
- TALUK BOUNDARY
- RAILWAY LINE
- ★ DISTRICT HQ
- TALUK HQ

INDEX

VILLAGES COVERED

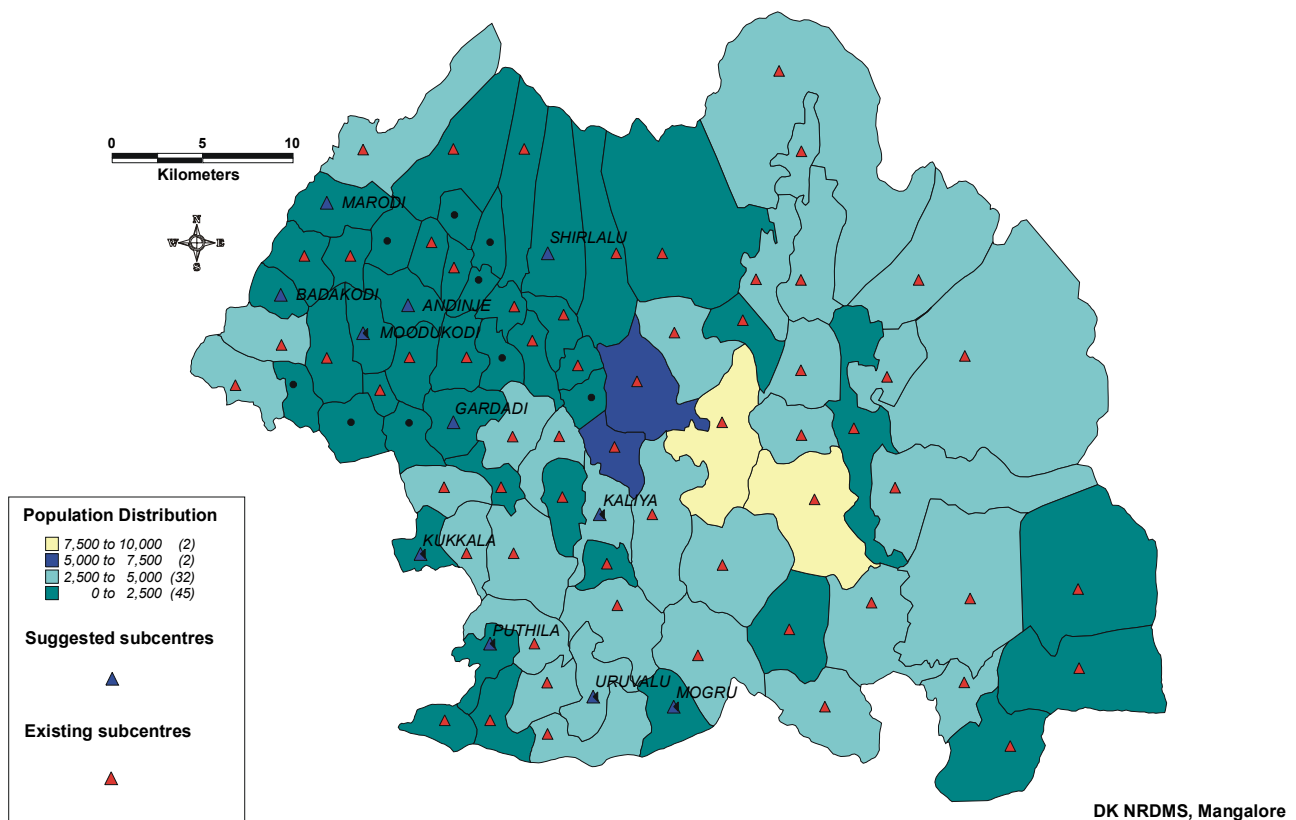
- ABOVE 15 VILLAGES
- ★ ABOVE 10-15 VILLAGES
- ▲ BELOW 10 VILLAGES

POPULATION

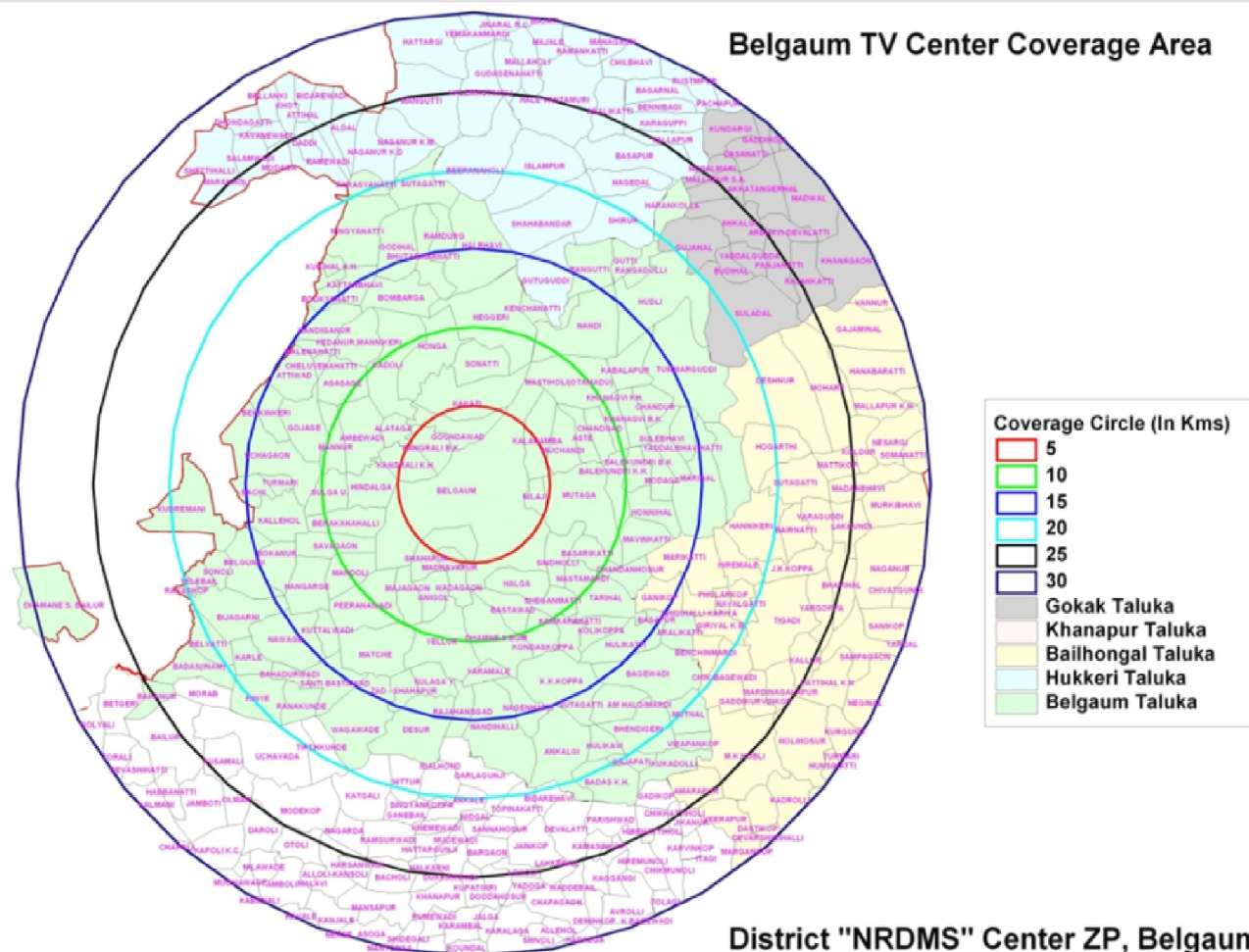
- ABOVE 10,000
- ABOVE 5,000-10,000
- BELOW 5000



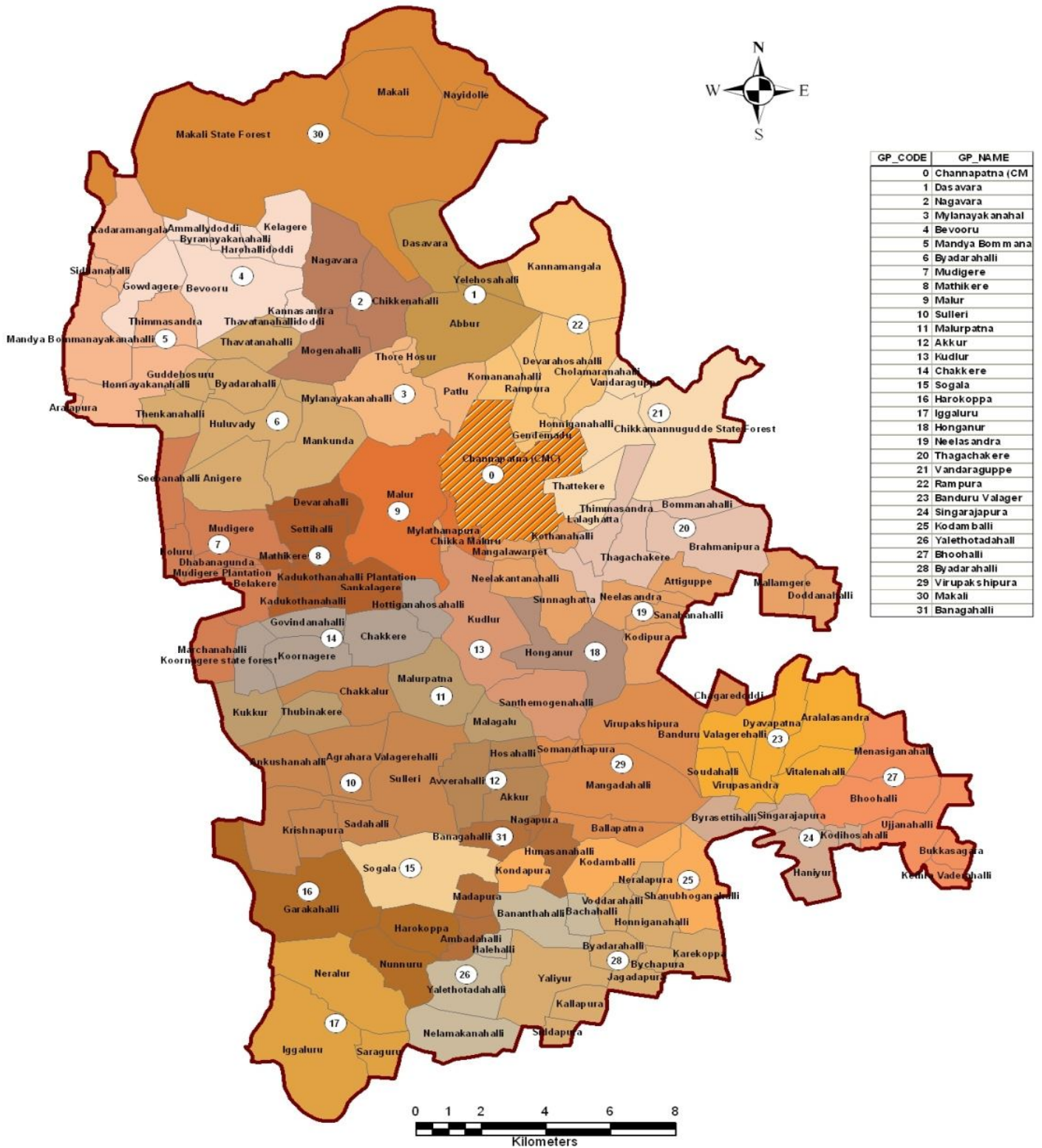
Existing and proposed subcentres in Belthangadi taluk



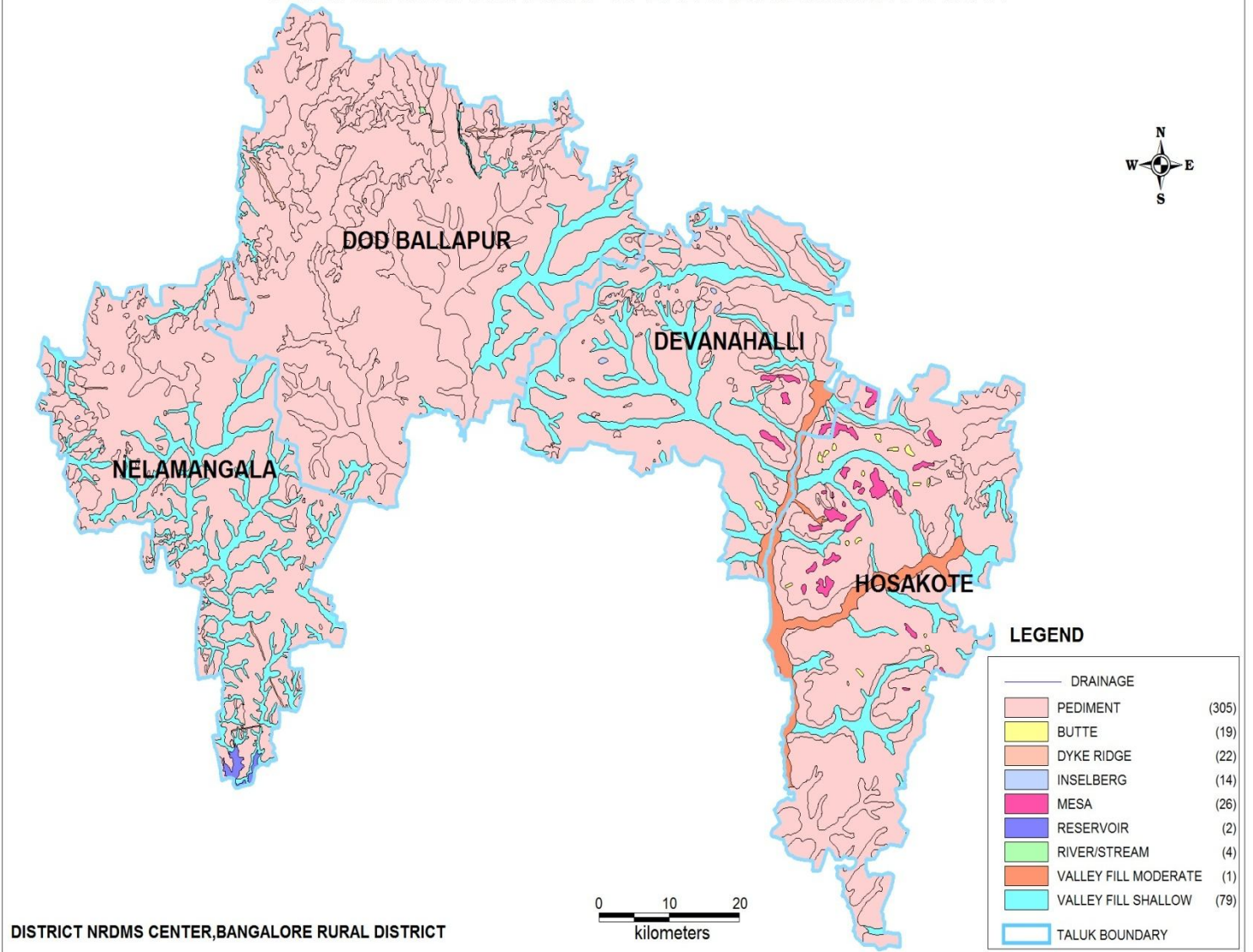
District "NRDMS" Center ZP, Belgaum



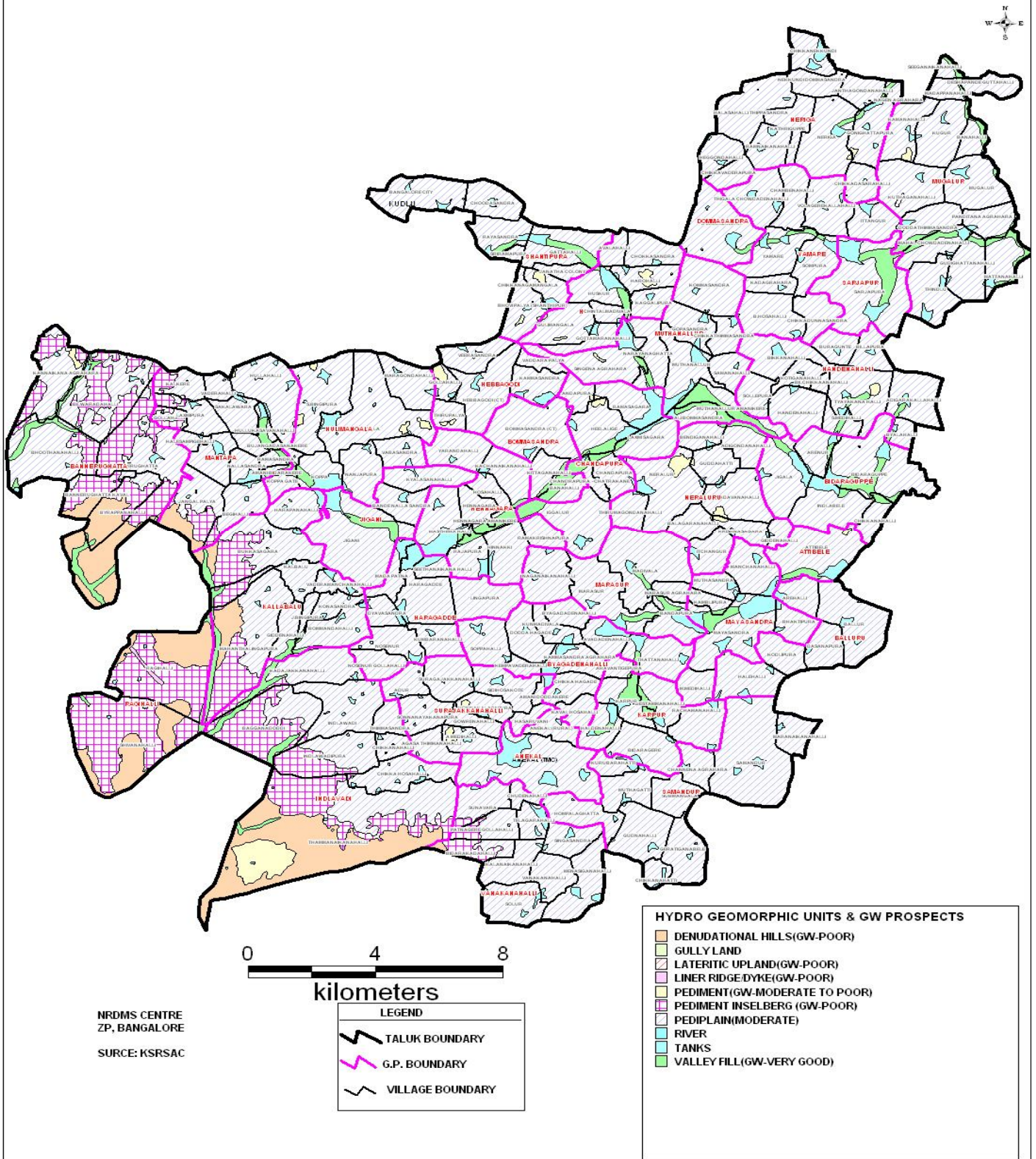
GRAMAPANCHAYAT-CHANNAPATNA TALUK



GEO MORPHOLOGICAL MAP OF BANGALORE RURAL DISTRICT



HYDRO-GEOMORPHOLOGY AND GROUNDWATER PROSPECTS MAP OF ANEKAL TALUK WITH GRAMPANCHAYATHS AND VILLAGES





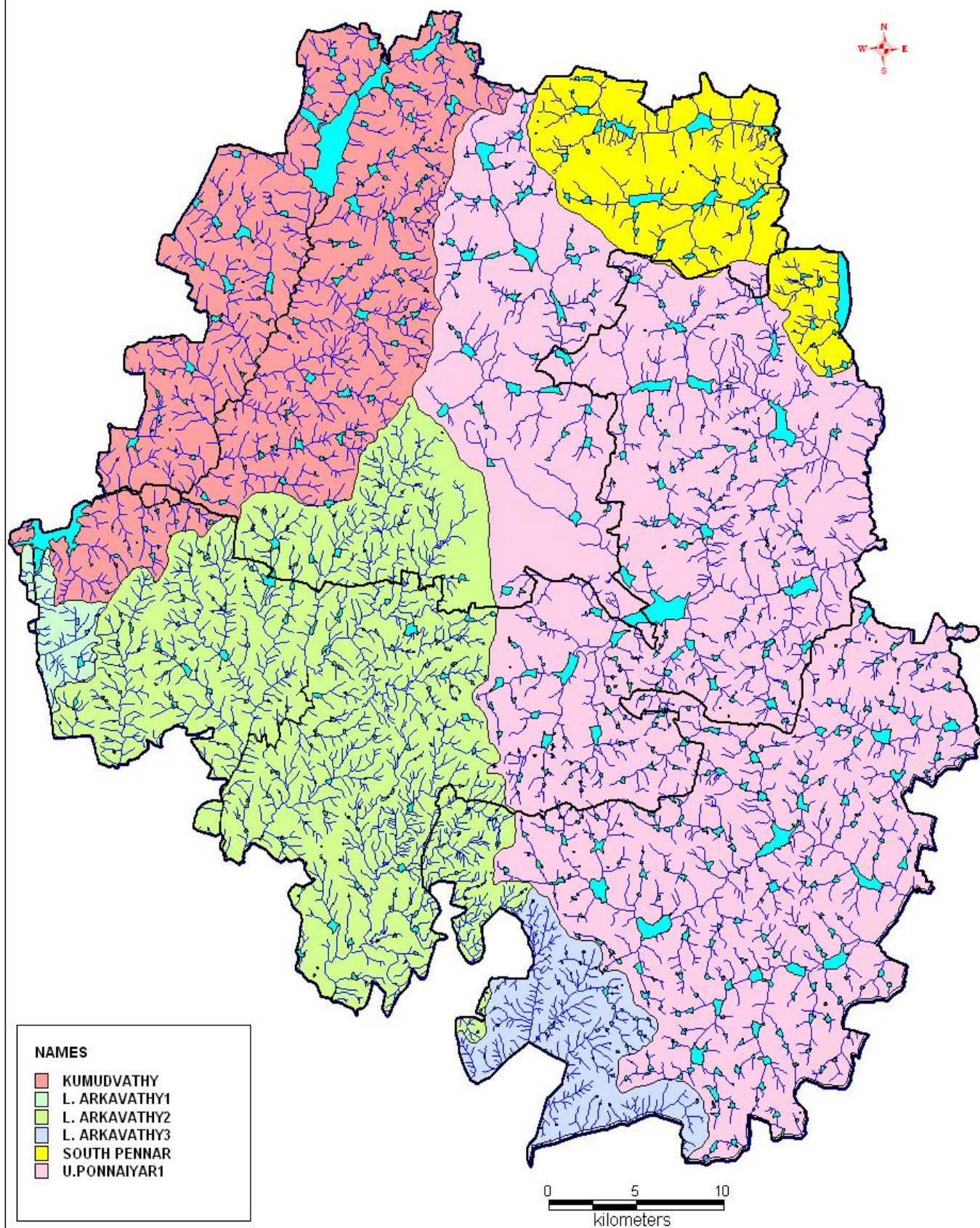
LEGEND

-
-  TALUK BOUNDARY
 WATERSHED BOUNDARY
 MICRO WATERSHED BOUNDARY
 DRAINAGE
 WATER TANKS

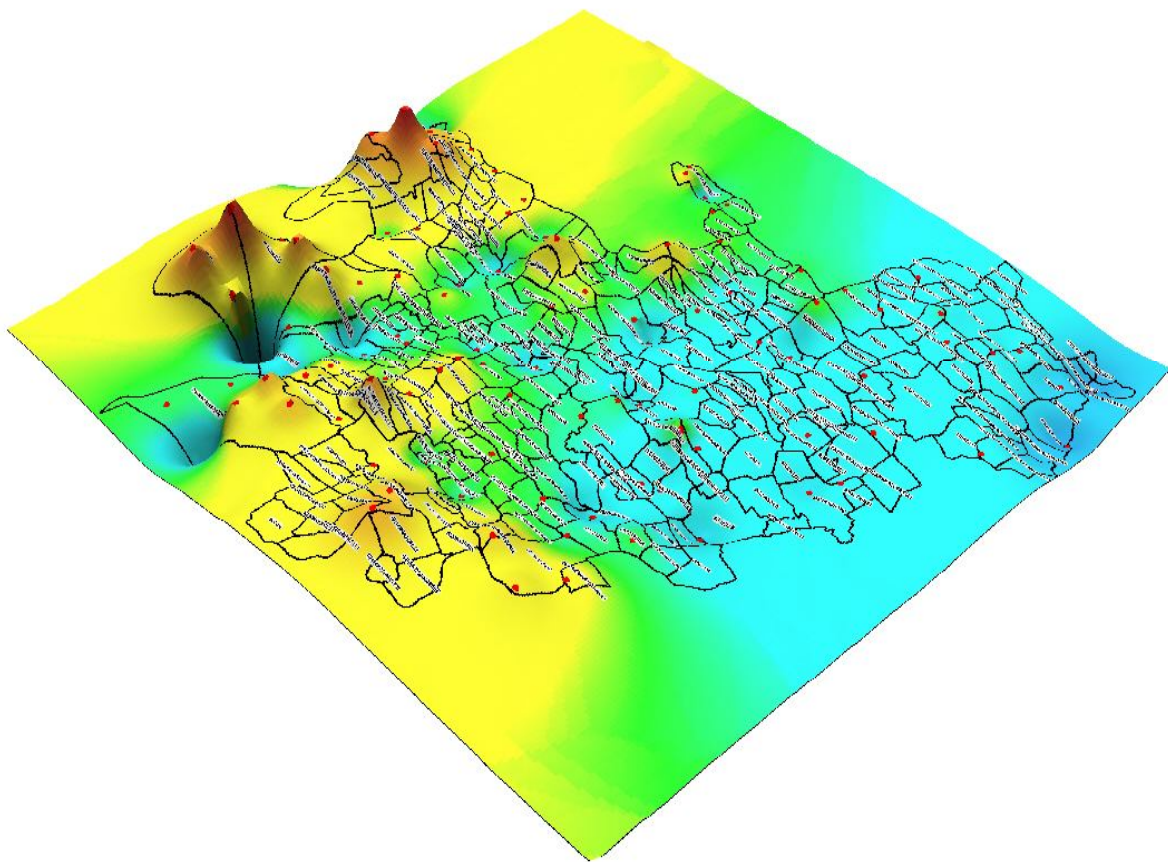
HYDROGEOMORPHOLOGICAL MAP OF BANGALORE URBAN DISTRICT



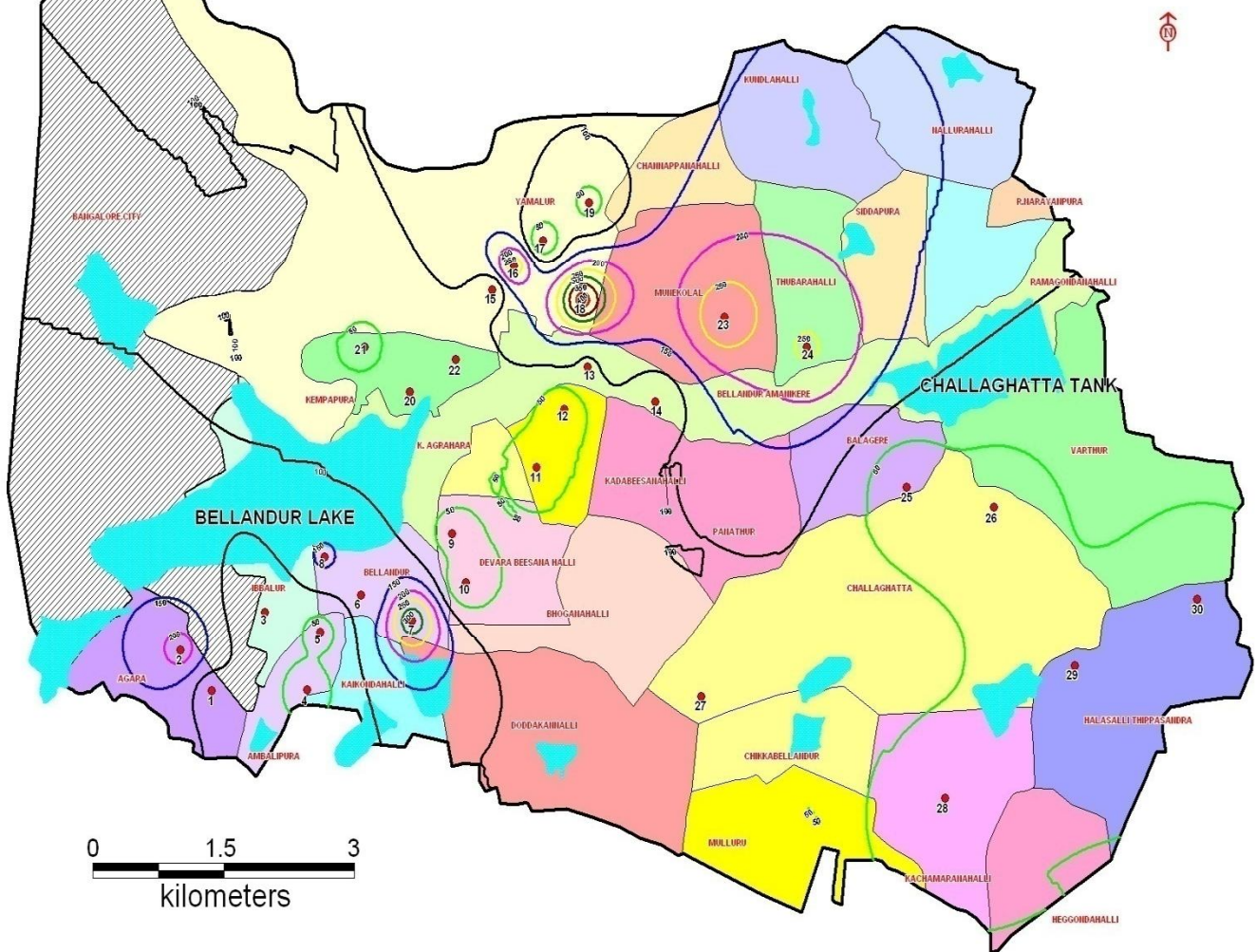
DRAINAGE WITH WATERSHEDS OF BANGALORE URBAN DISTRICT



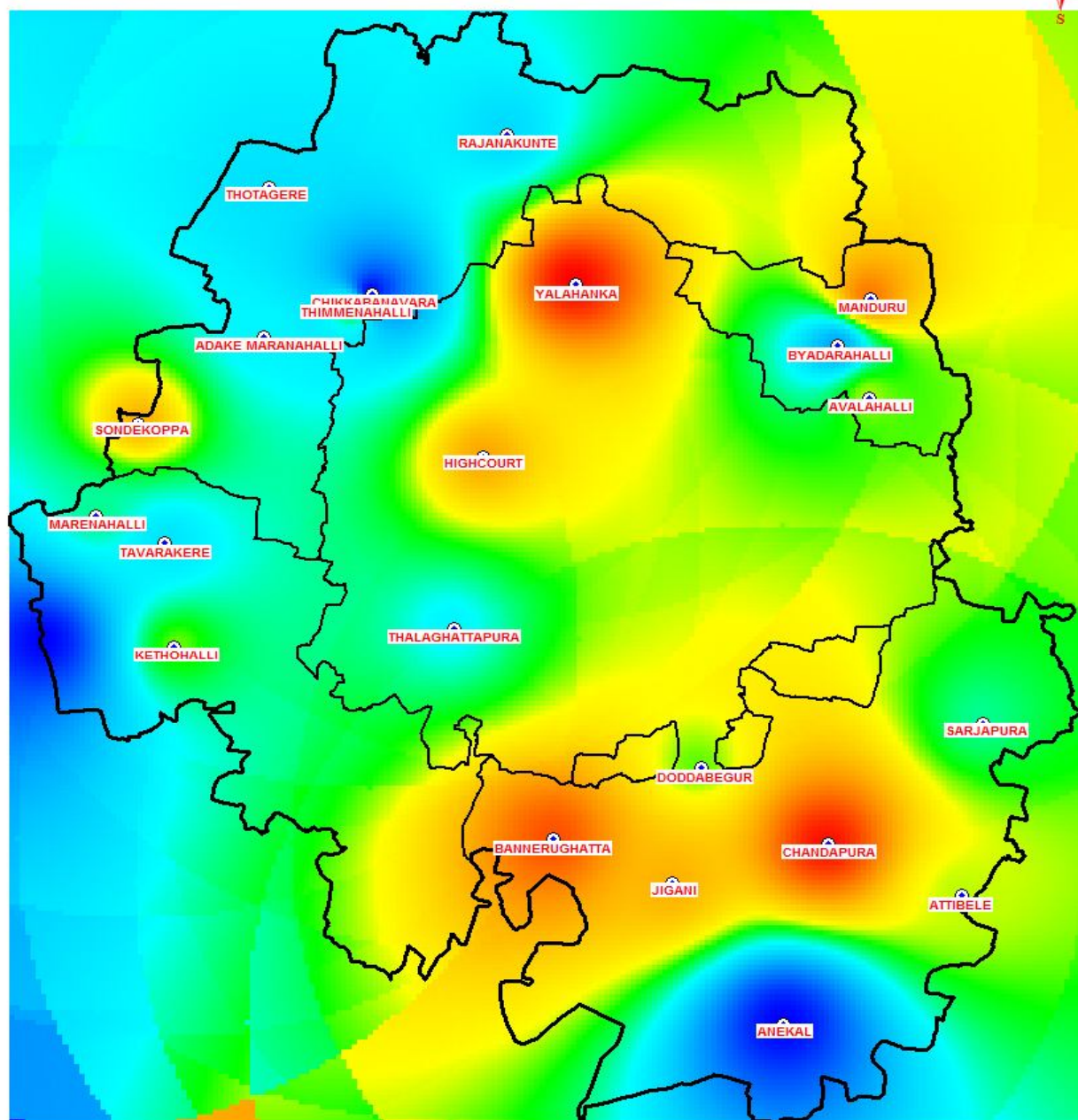
3D VIEW OF TOPOGRAPHY OF ANEKAL TALUK



Distribution of Nitrate (pre-monsoon) in Bellandur Industrial Area



INCREMENT IN DEPTH TO GROUND WATER LEVEL FROM JULY TO AUGUST 2009 IN BANGALORE URBAN DISTRICT



0 5 10
kilometers

SOURCE: MGD, GOK

INCREMENT

- 1.48
- 0.94
- 0.86
- 0.72
- 0

ಸುವರ್ಣ ಗ್ರಾಮೋದಯ ಯೋಜನೆ - ಕರ್ನಾಟಕ ಸರ್ಕಾರ - ೨೦೦೮

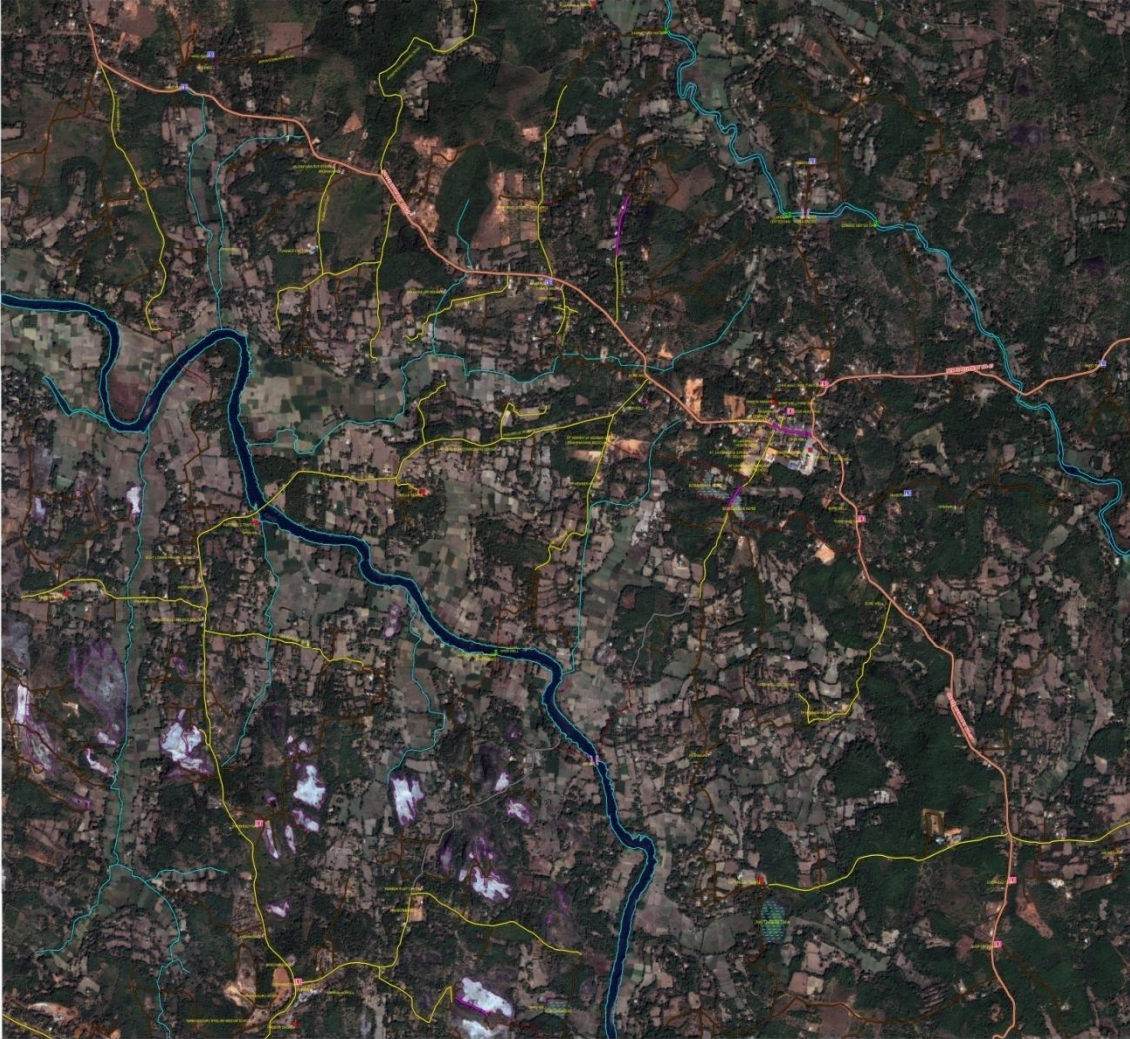
ಬೆಳ್ಳಿ ಗ್ರಾಮ ಪಂಚಾಯತ್ ಕಾರ್ಯಾಲಯ, ಉಡುಪಿ ಜಿಲ್ಲೆ

ತಾಲೂಕು : ಉಡುಪಿ

ಜಿಲ್ಲೆ : ಉಡುಪಿ

ಗ್ರಾಮ : ಬೆಳ್ಳಿ

ಉಪಗ್ರಹ ಪ್ರತಿಕ್ಷತಿ ಹಾಗೂ ಮೂಲಭೂತ ಸೌಕರ್ಯಗಳ ನಕೆ



LEGEND

- HAND PUMP
- OPEN WELL
- OVERHEAD TANK
- TEMPLE/CHURCH
- BORINGWELL
- PUBLIC/PRIVATE INSTITUTE/OFFICE/HOUSE
- BRIDGE
- VENTED DAM
- PROPOSED ONGOING ROAD
- PROPOSED WALK PATHWAY
- STATE HIGHWAY
- ASPHALT ROAD
- EARTHEN ROAD
- METALLED ROADS
- CONCRETE ROADS
- DRAINAGE
- POND
- RIVER
- QUARRY

ಉಡುಪಿ ಜಿಲ್ಲೆ



ಸಿದ್ಧಾಂತ / ಕೃಷಿ: ಗೂಗಲ್ ಆರ್ಕೆ

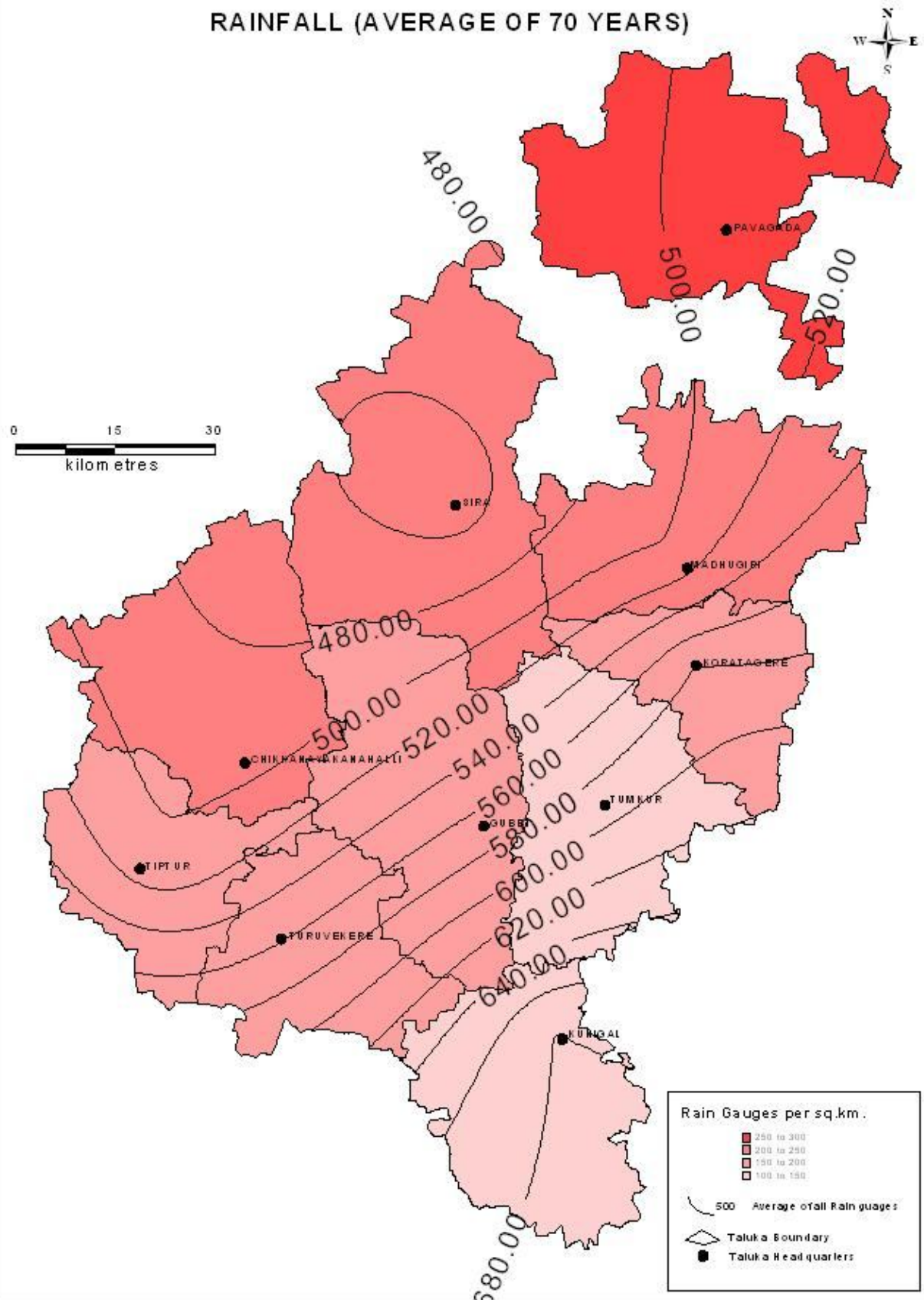
ತಯಾರಿಸಿದವರು:

ಎಸ್.ಆರ್.ಡಿ.ಎಮ್.ಎಸ್. ವಿಭಾಗ
ಕರ್ನಾಟಕ ರಾಜ್ಯ ವಿಜ್ಞಾನ ಮತ್ತು ತಂತ್ರಜ್ಞಾನ ಮಂಡಳಿ
ಭಾರತೀಯ ವಿಜ್ಞಾನ ಸಂಸ್ಥೆ ಆವರಣ
ಬೆಂಗಳೂರು - ೫೬೦ ೦೧೨

**OVERLAY OF WATERSPREAD AREA OF DIFFERENT TEMPORAL MAPS
OF HAGALVADI TANK IN GUBBI TALUK, TUMKUR DISTRICT**



TUMKUR DISTRICT **RAINFALL (AVERAGE OF 70 YEARS)**



TUMKUR DISTRICT



NITRATE CONTENT AS PER 2005 OBSERVATION WELL DATA

0 15 30
kilometres

